

Associate Membership

APPLICATION

(To join online go to www.ProBowSociety.net)

Name _____

Address _____

City _____ State _____ Zip _____

Phone () _____

Email _____

Age _____ Hunting Bow Weight _____

Type Compound Recurve Longbow

I firmly agree with the goals and principles of the Professional Bowhunters Society® and apply for Associate Membership.

Signature

Yearly Fee: \$35

Canadian Members: \$40 US

Payment Method (choose one)

Check Visa Mastercard

Credit Card Number _____

Expiration Date _____

Signature

Mail completed application to:

Professional Bowhunters Society®

P.O. Box 246 • Terrell, N.C. 28682

Phone: 704-664-2534, Fax: 704-664-7471

Email: ProBowhunters@roadrunner.com

PBS Website: www.ProBowSociety.net



Mission Statement As Adopted By the Membership

It is the purpose of the Professional Bowhunters Society® to be an organization dedicated to the preservation of bowhunting's traditional values, and to attract members who vow:

- That by choice they have selected bowhunting as their primary archery interest;
- To share experiences, knowledge and shooting skills;
- To set a good example and to serve as a role model for youth and others in the hunting fraternity;
- To abide by game laws and support sound scientific management of our outdoor resources.

Quality Members



As a PBS member you will be among the finest bowhunters in the world. The PBS consists of high profile bowhunters like Gene and Barry Wensel, E. Donnal Thomas, Monty Browning, Mike Mitten, Bryce Lambley, Vern Strubble, Fred Eichler, and Roger Rothhaar.

Other PBS members you will meet may not have as familiar of a name but you can be assured they are just as serious about bowhunting as you are.



**United We Act
For Preserving
Bowhunting's
Traditional Values**

www.ProBowSociety.net

Professional

The term “Professional” in our name refers to how we approach bowhunting in both attitude and skill. We are as serious about our actions, ethics, and dedication to our sport as any professional society is to their respective interests.

A Way of Life

To a PBS member, bowhunting isn't just a part of life – it's a way of life. As a PBS member you'll be part of a special group of people who view bowhunting as a special privilege to be protected and nurtured. PBS members routinely give of themselves to provide the most positive image possible for what we consider to be the king of all sports.



Hunt Hard – It's What We Do!

The PBS isn't for everyone. If you believe you get out of a hunt what you put into it and recognize that the hunt is far more than a kill, then you'll find the PBS to be your kind of organization.

Young Bowhunter Program

Biennially, the PBS conducts a youth leadership hunt to mentor and teach the future leaders of our sport. We believe that an investment in youth is an investment in our future.



Knowledge Through Experience

PBS members are some of the world's most experienced bowhunters and our goal is to share our experience and knowledge. From Alaska to Africa, Mongolia to Montana, Australia to Hawaii or just in the back 40 our members have been there and are dedicated to helping make your next hunt a success.

World Class Magazine & First Class Website

PBS members receive the Professional Bowhunter Magazine®, which includes member's stories, photos, how-to articles,

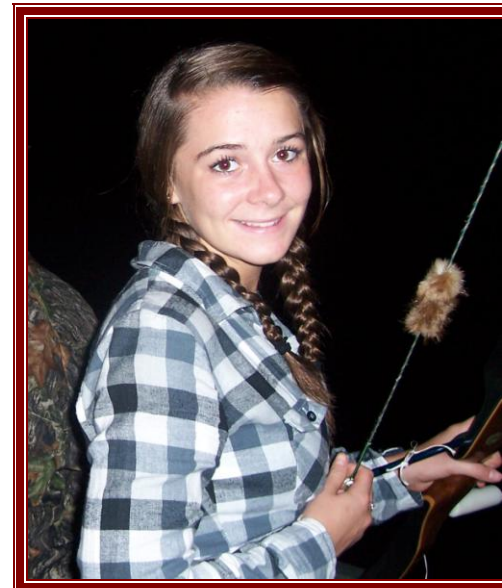
and news from around the country. The Professional Bowhunter Magazine® is one of the best bowhunting magazines around and it is only available to PBS members.

An added benefit of PBS is their interactive website and Cyber Campfire. The information shared on a daily basis is priceless. It is a great place for members to share their “Knowledge Through Experience”.

I Am The PBS

PBS is not for the mainstream bowhunter. PBS is for the hard-core, dedicated, highly ethical bowhunter. A large percentage of the PBS membership is made up of the leaders of local, state, and national archery organizations.

The bow people choose to carry, whether compound, recurve, longbow or selfbow, is not what makes a good member. It is the ethics, passion, and love of bowhunting that make you part of the PBS!



Biennial Gathering

Every two years the PBS Membership assembles somewhere in North America to reinforce our fraternal bond and celebrate the sport of bowhunting. Seminars, exhibits, photo and bowbuilding contests, and friendship make this a unique experience to those who share the brotherhood of the bow and arrow.

PBS Code of Ethics & Equipment Policy Statements

The proliferation of modern technology into the sport of bowhunting is of concern to all bowhunters when it leads to a significant increase in game harvests. Technological innovation can also blur the concept of "fair chase" and unethical hunting behavior. For these reasons, the PBS has deemed it necessary to establish a Code of Ethics and Equipment Policy Statements, which we believe our members have come to exemplify. For a thorough review of our Code of Ethics and Equipment Policy, please go to our website at www.ProBowSociety.net.

